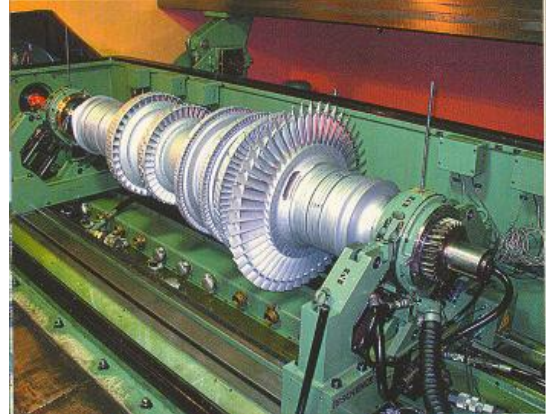


Mechanical Equipments

The company is planning to install testing facilities for turbine expanders and vertical compressors, testing parameters of control valves, vibration tests of impellers, etc.

All testing facilities will be equipped with advanced SCADA systems



Testing Complex

Air Testing of Compressors. Two full-size beds for shop-testing centrifugal compressors with 1 MW - 25 MW nominal capacity. The stands completely comply with API-617 and ASME PTC-10 international standards.



Full load string testing of Turbo-compressor packages. Each of three available closed loops allows for testing pilot models of turbo-compressor packages with ISO power rating of prime movers up to 25 MW.

Testing bench for reciprocal compressors and compressor-refrigerator equipment is designed for testing and adjustment of pilot designs of working cylinder valves, oil-free piston and stock seals, and oil catchers, durability tests, research and improvement of operation process.



Methane Reliquefaction testing bench is designed for simulation of methane vapors reliquefaction technology during transportation of liquefied gas by tankers. Manufactured by order of Moss Maritime, Norway.

Rotor balancing testing machine for centrifugal compressors on operating rotational speeds. Manufactured by Schenck. The stand has contributed to enhancing the vibration durability of compressors.



- Web site: _____
- E-Mail: _____
- Tel: [+98 21 26409560-77](tel:+98212640956077)
- Fax: [+98 21 26409556](tel:+982126409556)